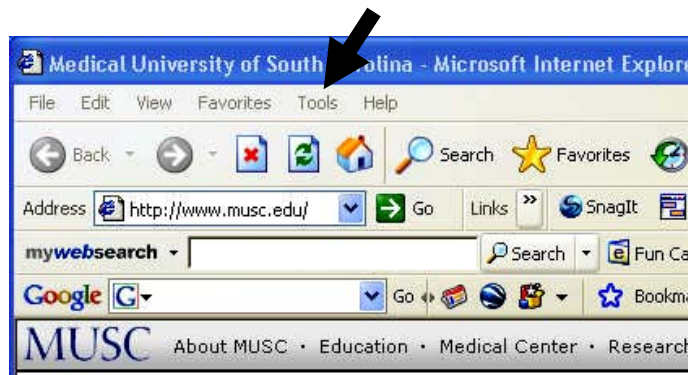


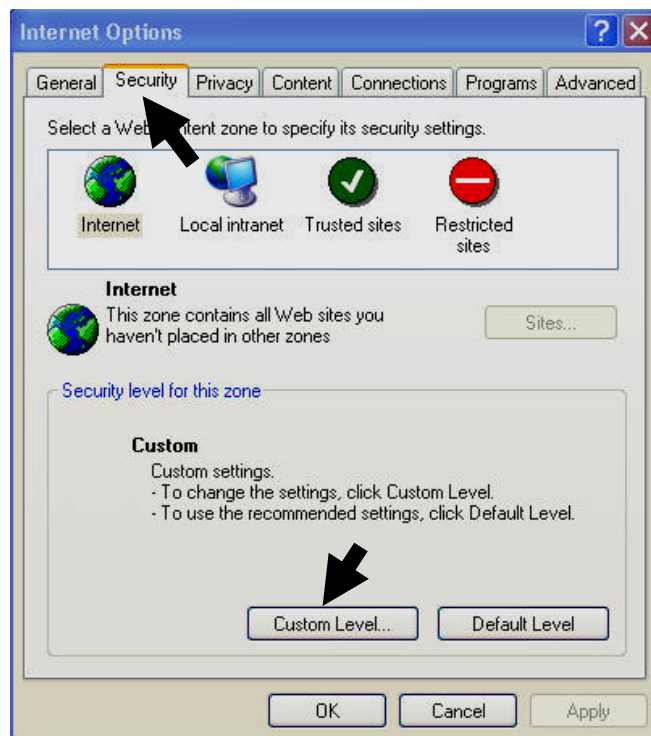
Navigating in the Case Pages Internet Explorer Browser Setting

Seminar Tutorial Case Pages are set up in frames. Clicking on History, Gross Findings, Slides and Questions in the left frame results in the information or virtual slides appearing in frames on the right. When you click on an item in the left frame of the Case page, the History, Data etc are all coming from the same domain. **HOWEVER, WHEN YOU CLICK ON A VIRTUAL SLIDE LINK THE VIRTUAL SLIDE IS COMING FROM A DIFFERENT DOMAIN AT <http://vslides.musc.edu> TO MAKE CERTAIN THAT THIS WORKS, 'Navigating Subframes Across Domains' will need to be enabled in the custom security settings of Internet Explorer. Other browsers like Mozilla Firefox and Safari should work with no special settings required.**

1. Open Internet Explorer
2. In the menu at the top select tools and scroll down to select options.



3. In the window that pops up click on Security at the top and then on Custom Level below.



Step 4, Next page

4. In the Custom Level window scroll down until you see the heading Miscellaneous, then continue scrolling until you find "Navigate sub-frames across different domains" as illustrated below.

Select enable and then click on Okay at bottom of the window.

