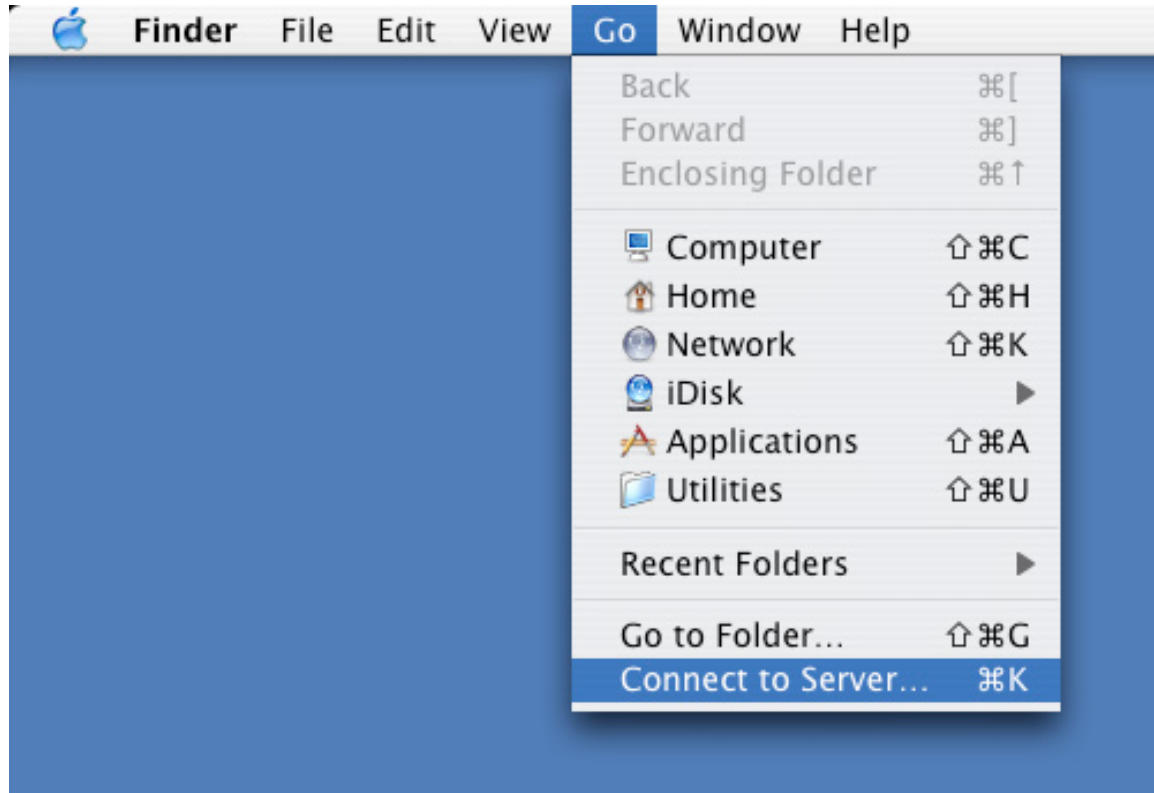


Making a connection to the new MUSC Web Development Server using:

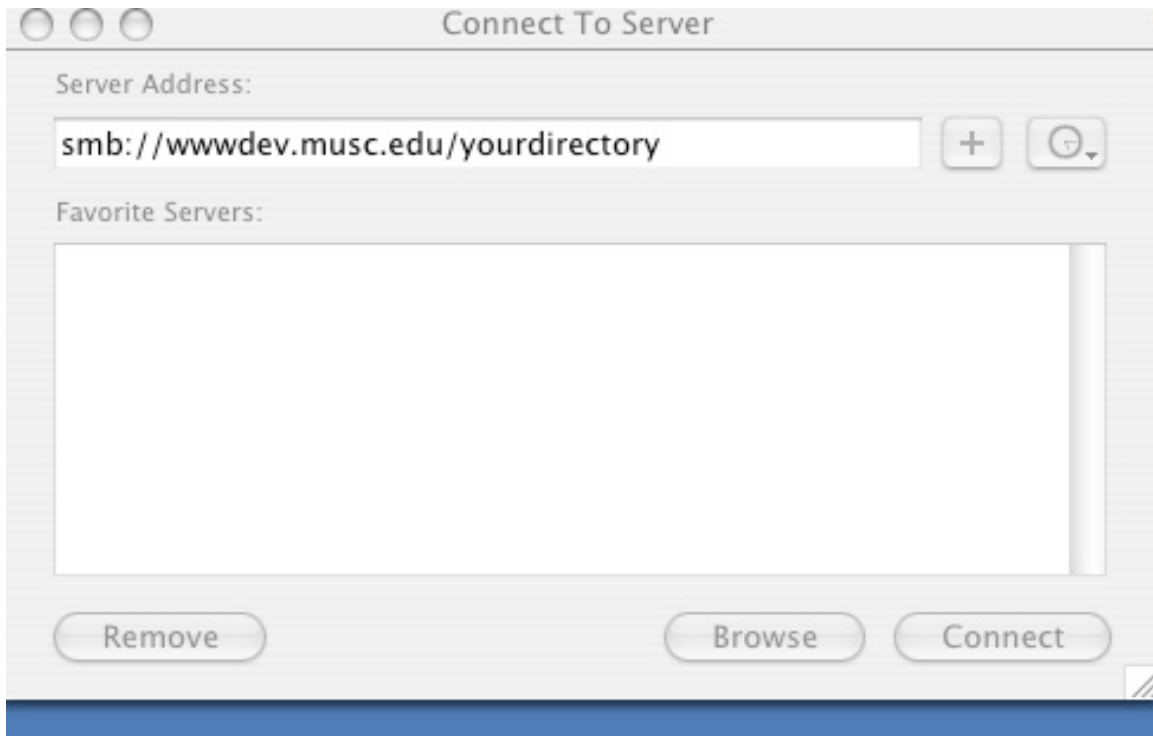
1. Macintosh OS 10.3 built-in Connect to Server with Samba
2. Using DreamWeaver MX 2004 Configure Server for ftp command under Sites
3. Using CyberDuck (freeware) sftp application

**1: from Mac OS 10.3 (or greater)**



Under the Go menu, select Connect to Server

In the Server Address window, type `smb://wwwdev.musc.edu/yourdirectory`



Where *yourdirectory* is the actual name of your site, then click Connect

In the SMB/CIFS Filesystem Authentication window:



**SMB/CIFS Filesystem Authentication**

Enter username and password for  
WWWDEV.MUSC.EDU:

Workgroup/Domain

Username

Password

Add to Keychain

Cancel OK

- leave Wordgroup/Domain **blank**
- Username should show your MNA Login in all caps, it doesn't matter here; leave it
- type your MNA password **In Lower Case**, and click OK

Your site should now be mounted on your desktop.

## 2: From Dreamweaver:

Note: This setup assumes DreamWeaver MX 2004.

Configure Server

Name: MUSC Dev Server

Access type: FTP

FTP host: wwwdev.musc.edu

Host directory: yourdirectory

Login: yourMNA

Password: ●●●●

Use passive FTP

Use firewall

Use Secure FTP (SFTP)

Test

Save

Firewall Settings...

Server Compatibility...

URL prefix: http://wwwdev.musc.edu/yourdirectory

Help Cancel OK

- From DreamWeaver main menu, Open Sites -> Manage Sites
- Click New and Choose FTP & RDS Server
- Fill out the site as you see above.
- Click OK

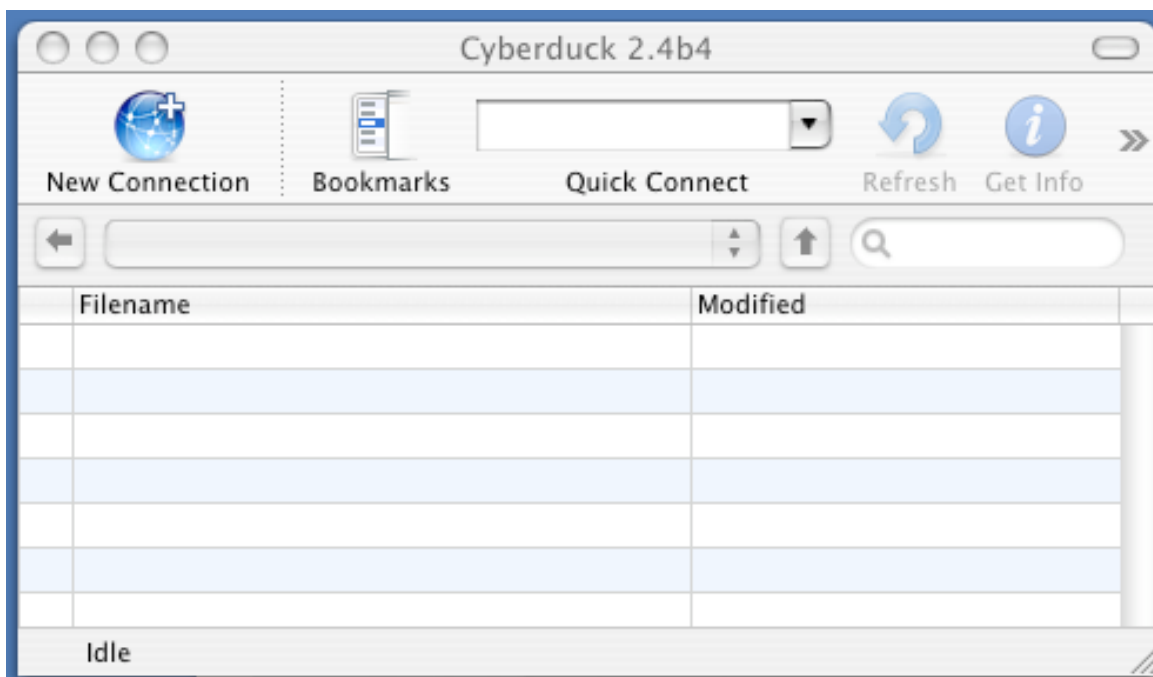
Additional notes: Of course, Host directory is the name of your site, Login is your MNA login in all lower case, and Password is your MNA password in lower case. Make sure to click Use passive FTP as this seems to work better with a Macintosh connection. The URL prefix field should be automatically filled out for you.

### 3: From CyberDuck

Note: Cyberduck is a free sftp (secure ftp) program that can be downloaded from here:

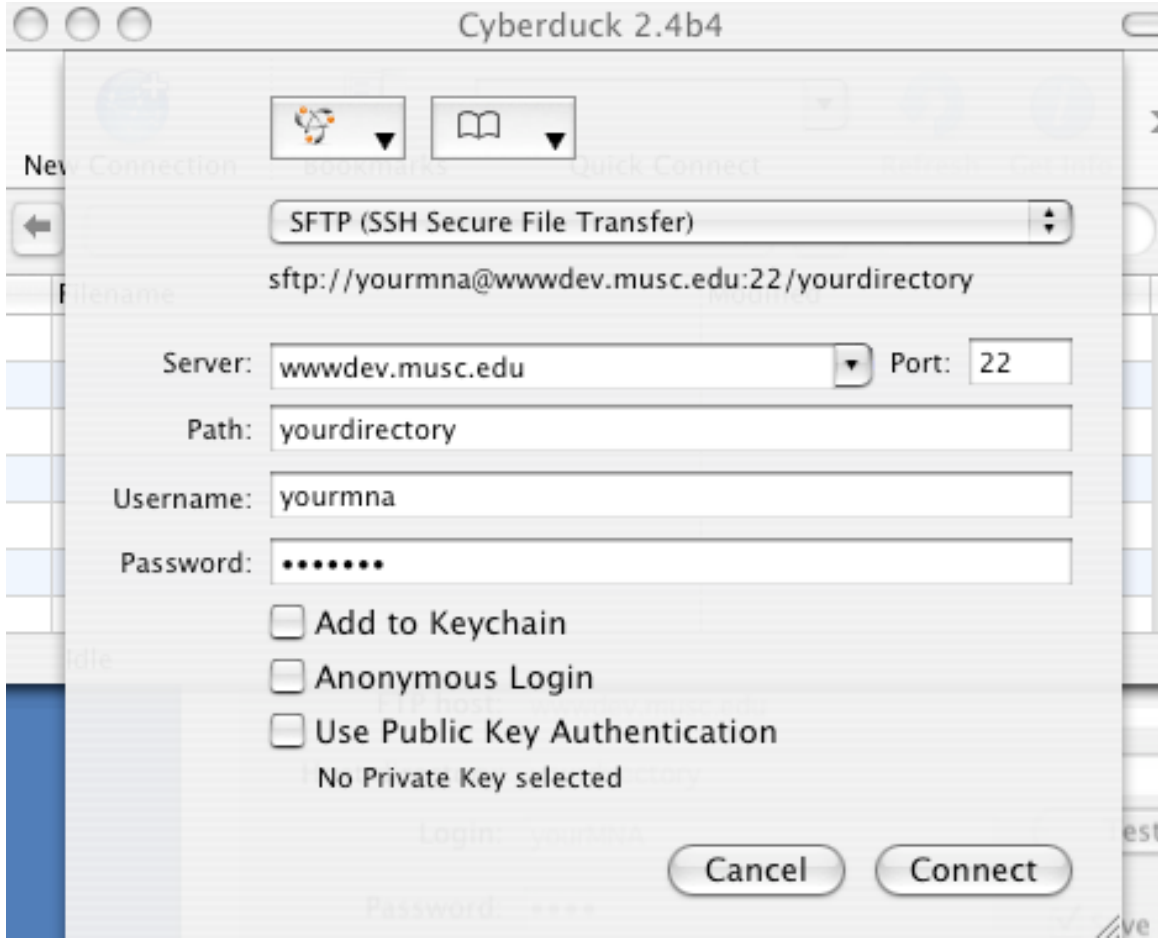
CyberDuck, while strictly speaking is not necessary for Mac OS 10.3 and above, facilitates some features of sftp and brings a convenient look and feel to the file transfer process. If you're using a Mac OS prior to 10.3, you may be required to use CyberDuck for connectivity.

After downloading and unstuffing CyberDuck, run the application



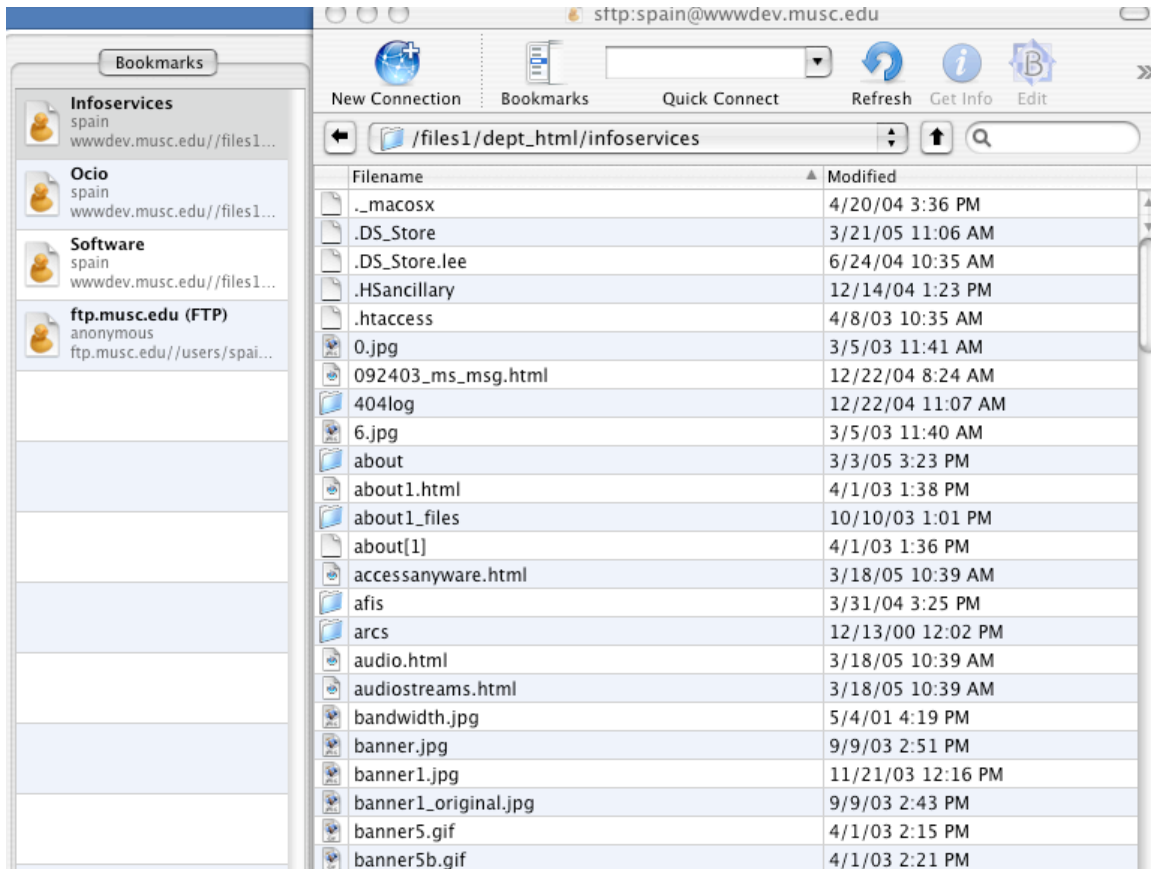
From the Main CyberDuck window, click New Connection

Fill out CyberDuck as you see here. Of course, yourdirectory and yourmna should contain the appropriate information. Note that SFTP is chosen (this is a drop-down button). The port should be chosen automatically. Do not add your password to the keychain. Click Connect



You should now be able to see all of the files in your site. Note that by using the Bookmarks view, you can manage more than one site. Also note that the path when using sftp is different from the path when using regular ftp.

The sftp path is: `wwwdev.musc.edu/files1/dept_html/yoursite`



Whether you use the OS, DreamWeaver, or CyberDuck to move files to a from the development server, remember this important step:

In order to make your files visible on the LIVE server (www.musc.edu) you must use the Web Publish page to "push" your pages to publication.

<https://webcontrol.musc.edu/publish/>