

Mapping a local drive to Homeroom from a PC (Windows 95, 98, 2000, NT)

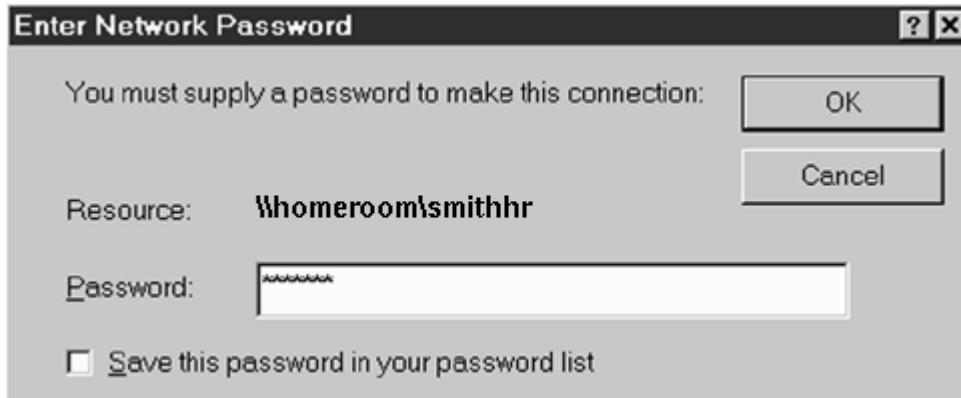
1. Right-Click on the **Network Neighborhood** icon on your desktop
2. Select **Map Network Drive**.



3. A dialogue box will appear.
4. Click on the arrow to the right of **Drive:** to select a drive letter. (Be sure to select a letter that is not already in use.)
5. Type in the following text in the **Path:** `\\homeroom\yourMNAusername`
Hint: Your MNA username is also the same as your e-mail (what appears before "@mus.edu")
6. Click **OK**



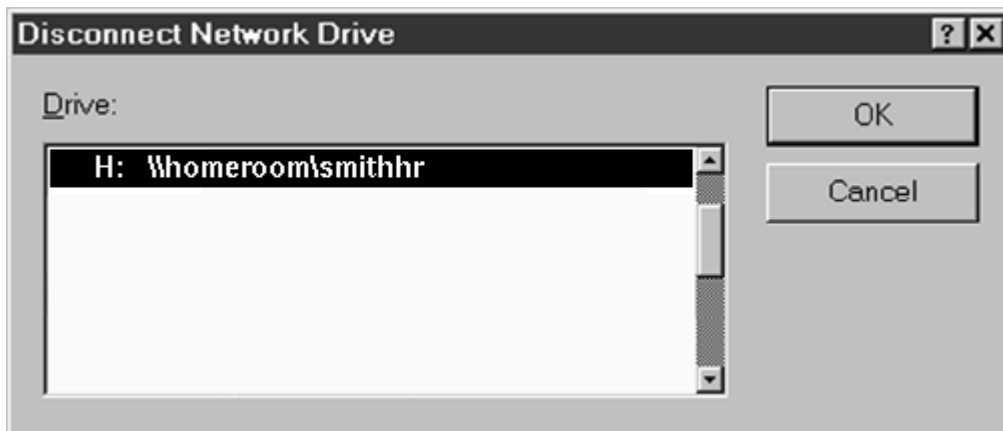
7. Another dialog box appears labeled **Enter Network Password**.
8. Next to **Password:** enter your MUSC Network Account (MNA) password.
Remember, you password is case sensitive. **MyPassword** and **mypassword** are not the same thing.
9. Make sure the box to the left of **Save this password...** is empty.
10. Click **OK**
11. You should now be connected to your Homeroom Directory. (It may take up to a few minutes to connect.)
12. You may use this directory like any other drive on your computer (A:\ C:\ etc.) by adding folders, files, etc.



13. It is important that you **Disconnect** from your Homeroom Directory when you're finished working with it.
14. Right click the **Network Neighborhood** icon as you did to connect to the Homeroom Directory and select **Disconnect Network Drive**.



15. In the **Disconnect Network Drive** dialog box, highlight your Homeroom Directory drive and click **OK**.
16. You're now disconnected from your Home Directory.



A few precautions

Always

Disconnect from your Home Directory when you've finished a session

- From a Mac, drag you Home Directory icon into the trash
- From Windows, right click the Network Neighborhood icon, then select **Disconnect**

Never

1. Never throw out a file that begins with a period (.) These are called "dot" files and are crucial to the smooth operation of your e-mail and other programs (files like .pinerc and .cshrc, etc.).
2. Never throw out the folder called *mail*
3. Never throw away the files *ovid.cci, ovid.ini, or ovid.hcc* These files contain your Ovid configuration.
4. Do not let unneeded files accumulate: keep your Home Directory lean.

Problems

** If you have trouble connecting to the Homeroom network after following these steps, install the [plaintextpassword](#) file, reboot, and try logging in again. Windows 95 and NT machines sometimes have trouble connecting until this is done.

1. Download the version that applies to your machine.
2. Double-click on the file. It will expand and show up on your desktop.
3. Double-click the file again and you should see...

"Information in win95_~1.reg (or Windows NT depending on your operating system) has been successfully entered into the registry."